

Egyptian Marble Foundation – Profile

Egyptian Marble Foundation - **EMC** in stone and marble business since 2002, **EMC** has been committed to providing quality natural stone to the stone industry.

Our Company use state of the art equipment to ensure accurate calibration, and we are devoted to the proper selection and quality control of the material for international and Local Markets. We take pride in the quality and variety of our materials. Our products are always inspected prior to shipment to ensure that the materials are of the best quality.

EMC established to meet all requirements for marble in the construction industry all over the world. We are looking forward to establish mutually beneficial relationship with all customers worldwide and offer guaranteed material and finish quality as well as direct mail sample for customer's approval.

Materials & Production Process

We work to export all Egyptian Natural stones (**Limestone, Sandstone, Marble and Granite...etc.**) for international markets using high Italian technology during the production process and its steps to insure the best materials quality and best export packing conditions to keep our reputation with all clients and their end user and ensure the quality.

We are able to submit all clients with any surface finishes required such as: **Polished, Honed, Brushed, Tumbled, Push hammered, Sand Blasted (any antique finish)** for floors, walls, kitchen counter-tops bathrooms, fireplaces, pavement and landscape. we have ability to produce and supply our materials in all Shapes started from **Blocks, slabs, strips, cut to size (Tiles or Pavers)** for internal and external use in addition to any special dimensions to fulfill the projects demands with various edges fabrication for stairs & swimming pools fixation (pool coping).

Our Mission

EMC Mission is to be the most reliable source for marble, granite, limestone and other stone elements for either your home or projects. We pride ourselves in providing the newest and most current stone sources and colors as well as having fresh designs. Every job is a one-on-one experience with the utmost care in the detail and execution of the job.

Packing

To ensure the quality during materials load, unload and shipping process we must guarantee our packing system and used qualified woods to prepare professional wooden bundles for slabs & secured wooden crates for both tiles and pavers.



International Markets

Due to our quality control our material runs now in the international market.
As we export all materials kinds to huge market all over the world for example:



International Exhibitions

EMC usually participating in many exhibitions in all over the world to:

- 1- Meet with our customers and extend our clients range.
- 2- Present our high quality materials.
- 3- Know more about the latest production technology.

Exhibitions list:

- 1- Marmomacc Verona, Italy.
- 2- Stone Tech China
- 3- Covering USA.
- 4- Xiamen, China.

- 5- Project Qatar.
- 6- Stone Tech, Germany.
- 7- Interbuild, Egypt.
- 8- Stone Gate, Egypt.

EGYPTIAN MARBLE FOUNDATION
FOR MARBLE AND GRANITE



Materials & Production Process

Materials & Production Process

We work to export all Egyptian Natural stones (**Limestone, Sandstone, Marble and Granite...etc.**) for international markets using high Italian technology during the production process and its steps to keep our reputation with all clients and their end user and ensure the quality.



We are able to submit all clients with any surface finishes required such as: **Polished, Honed, Brushed, Tumbled, Push hammered, Sand Blasted (any antique finish)** for floors, walls, kitchen counter-tops bathrooms, fireplaces, pavement and landscape. we have ability to produce and supply our materials in all Shapes started from **Blocks, slabs, strips, cut to size (Tiles or Pavers)** for internal and external use in addition to any special dimensions to fulfill the projects demands with various edges fabrication for stairs & swimming pools fixation (pool coping).

To ensure the quality during materials load, unload and shipping process we must guarantee our packing system and used qualified woods to prepare professional wooden bundles for slabs & secured wooden crates for both tiles and pavers.

Why choose us
If you wish to enhance the look of your home or your project, look no further than EMC. We are the source of all your building needs from natural stones. Our lengthy list of satisfied customers includes consultants, wholesalers, distributors, interior and exterior designers, construction companies and Global Stone Importers. We are an established company that is large enough to fill substantial commercial orders whether in Export field or Local demands.

No matter how large or small a job is, it will be given the same individual attention as the quality of manufacture is our first priority. We can also come up with innovative designs which you may not have thought possible.

We offer a complete service from initial instruction through to installation and we welcome both retail and trade customers.

Our Vision

EMC Vision is to remain a leading company in the stone industry in Egypt, the region and the world. This vision will always be our target to accomplish which will constantly push us to improve our quality standards to meet our customers' expectations and needs.

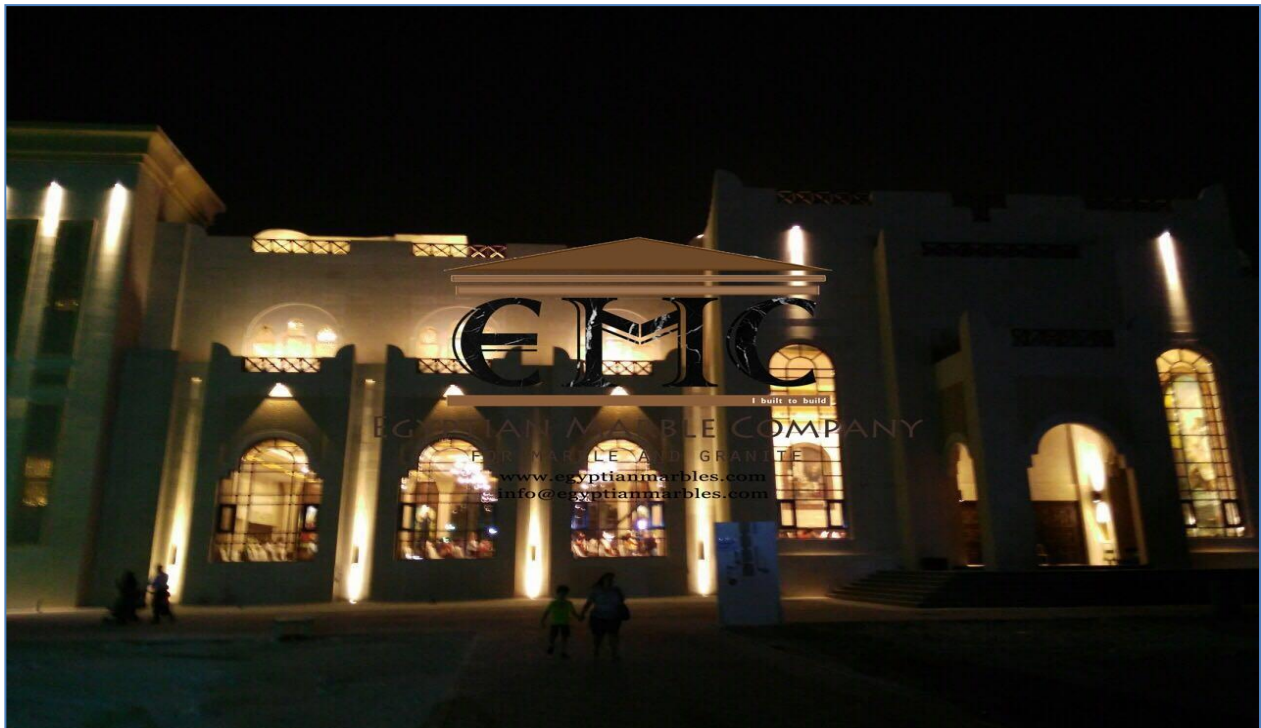
PROJECTS REFERENCE

Project Name	Location	Qyts
Al Sadd Mall	Doha - Qatar	8000 M2
Sheikh Bandar 2nd Palace	Doha - Qatar	10000 M2
Coptic Orthodox Church	Doha - Qatar	7000 M2
Navigation Tower	Doha - Qatar	20000 M2
National Library	Doha - Qatar	21500 M2
Ministry of Interior Headquarter	Doha - Qatar	22000 M2
Al Fardan Palace (Supply & Install)	Qatar	7000M2
Musheireb project	Sudan	22000M2
Qatari Diar	Sudan	20000 M2
Kharafi Palace	Kuwait	180000 M2
Jumeriah Palm	Dubai - UAE	140000 M2
Shangrila Hotel	Abu Dhabi UAE	10000 M2
Sheikh Zayed Desert Learning Center	Al Aain - UAE	120000 M2
2000 Villa Eye Area	Abu Dhabi - UAE	26000 M2
Al Sondos Dubai Marina Hotel	Dubai Marina - UAE	52000M2
Kempinski Hotel	Abu Dhabi - UAE	28000M2
dubai airport extension	Dubai - UAE	12000M2
Al Maktoum International Airport	UAE	18000M2
Avenue El Fotam	UAE	36000M2
King Abdullah University	KSA	290000 M2
Princess Noura University	KSA	155000 M2
King Abdullah Financial District	Al Ryiad - KSA	53000 M2
Residential Building	Jeddah - KSA	10000 M2
Residential Villas compound	Jeddah - KSA	100000 M2
Cairo Festival City (Supply & Install)	Cairo - Egypt	29500 M2
Ritz Carlton Hotel (Supply & Install)	Egypt	17000M2
Sheraton Cairo El Gezira (Supply & Install)	Egypt	3500M2
Panorama Al Jabal Al Akhdar (Supply & Install)	Egypt	24000M2
JW Marriott Hotel	New Delhi - India	35000M2
Hotel Uzbekistan	Uzbekistan	35000M2
Rotana Hotel Aqaba	Jordan	15000M2

Al Sadd Mall - Qatar



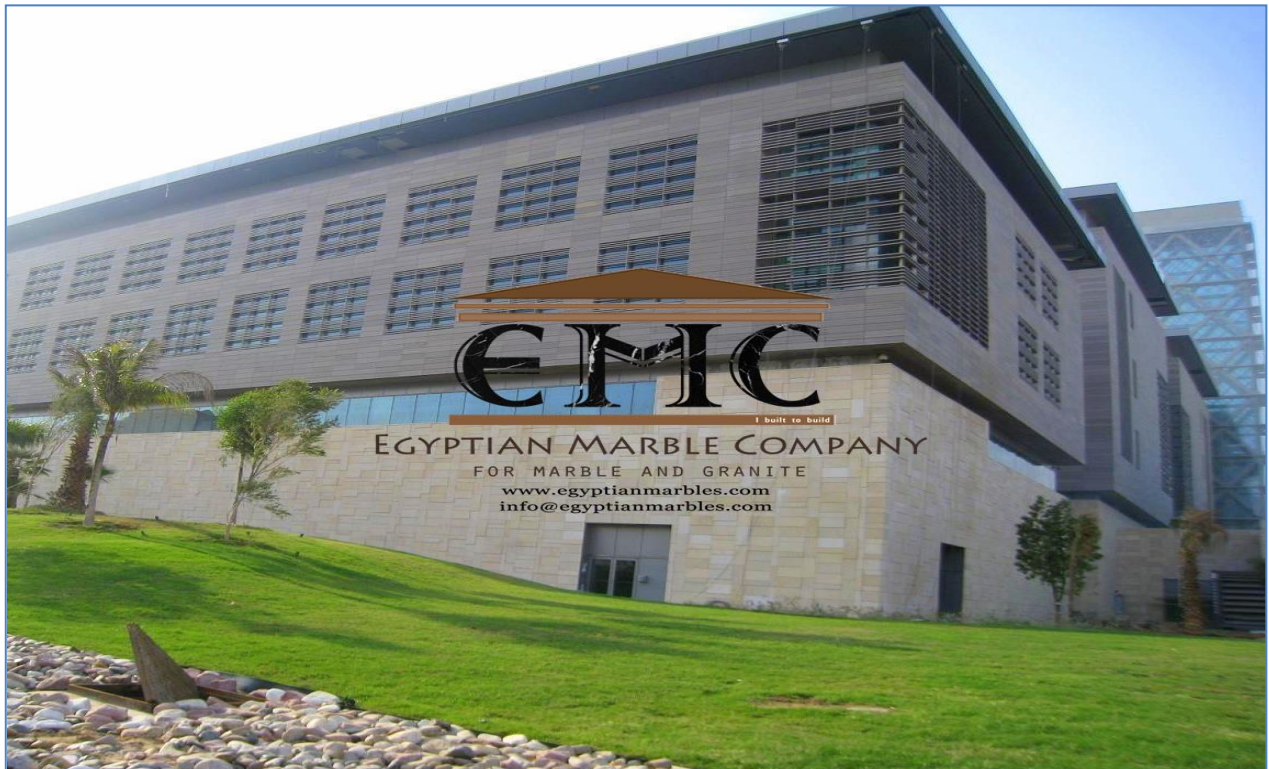
Coptic Orthodox Church - Qatar



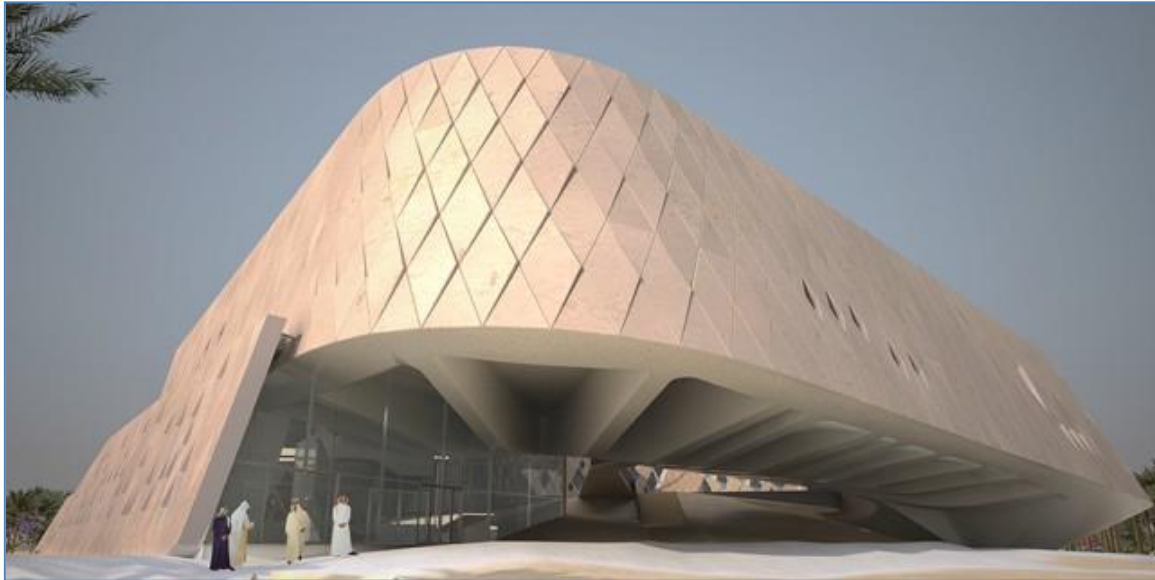
Dubai University



King Abdullah University - KSA



Sheikh Zayed Desert learning center - UAE



Ministry of Interior Headquarter - Qatar



Princess Nora University - KSA



Ministry Of Interior Head quarter- Doha



Contact Details

Head Office

Egyptian Marble Foundation

Address: 101 Emtedad El Amal Autostrad – Apartment 117,
Maadi, Cairo, Egypt.

Web Site: www.egyptianmarbles.com

Email: info@egyptianmarbles.com

Cell: (002) 0122 73 66 770 – 0102 02 00 811

Russia Branch

Dandara Trade

Address: 115114, 20 Derbenevskaya street, Moscow, Russia.

Web Site: www.dandara.ru

Email: wasfy@dandara.ru

Cell: (0079)77-3970-676

Spain Branch

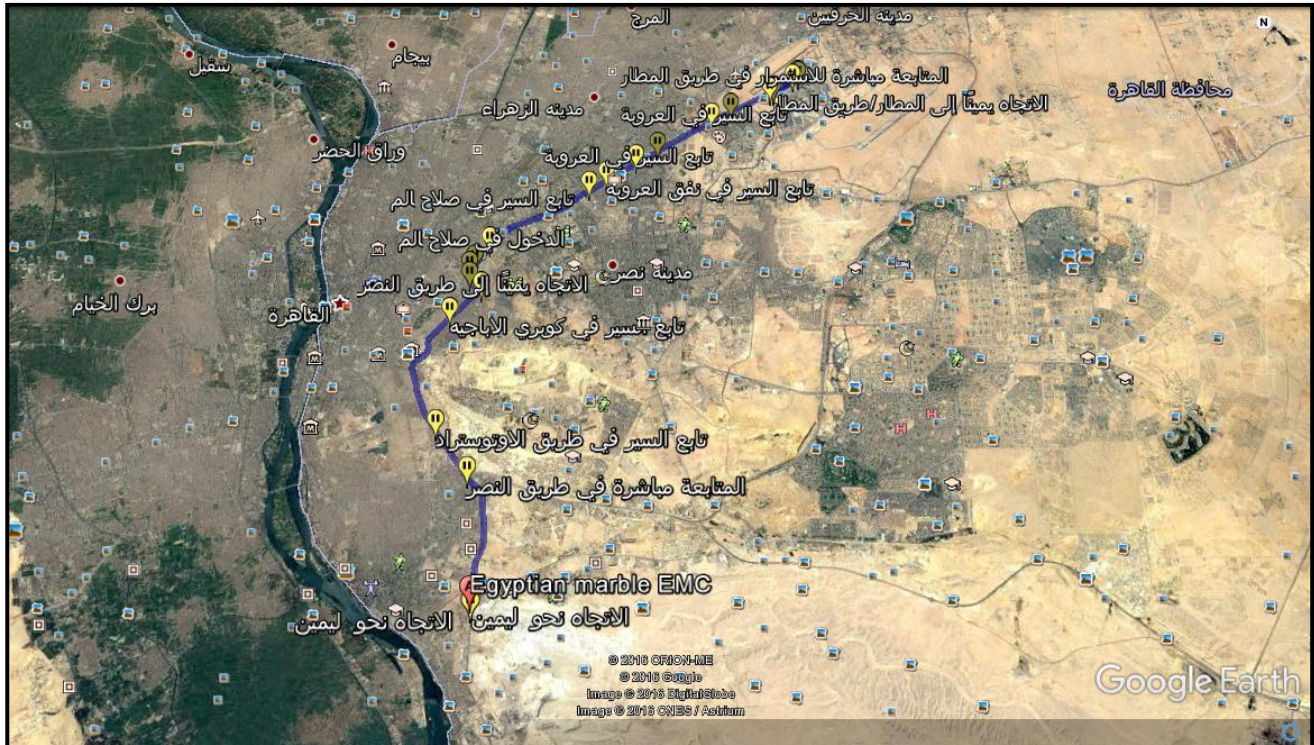
Egyptian Marble Foundation

Address: Calle La Cámara 46 Primero derecha. C.P 33401
Avilés. Asturias.

Web Site: www.egyptianmarbles.com

Email: basant@egyptianmarbles.com

Cell: (0034) 633 04 58 34



From Cairo Airport to EMC Company 39.50 KM 38 Minuets Ring Road Way.

Monuments & Historical Places.

From EMC to Pyramids of Giza 16.2 KM 27 Minuets Ring Road Way.

From EMC to Cairo Museum 10.6 KM 22 Minutes.

From EMC to Nile Corniche 2.3 KM 9 Minutes.

From EMC to Down town centre 22.2 KM 27 Minutes .

Accommodation

-From Holiday Inn Hotel (4 stars) to EMC Company 15 KM 6.9 Minuets .

-From Tolip Inn Hotel Maadi (4 stars) to EMC Company 6.8 KM 18 Minuets

-From Four Seasons Nile Plaza Hotel (4 stars) to EMC Company 6.5 KM 16 Minutes.

-From Kempinski Nile Hotel (4 stars) to EMC Company 7.5 KM 20 Minutes.

-From Maadi Hotel (3 stars) to EMC Company 5.8 KM 22 Minutes.